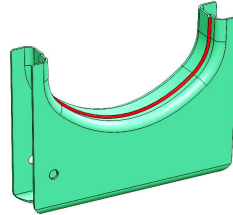


# CAM PROFILE ROTARY WELDING SPM (2 TORCH)

## Case Study-3



### The Problem



Customer's problem-

- Not able to meet production volume
- High Investment in Robotic welding

### Solution



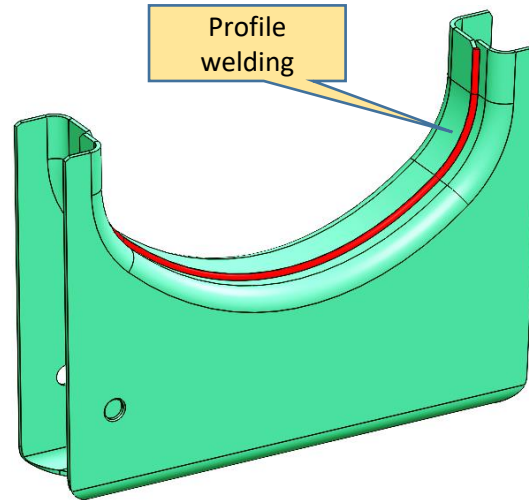
Profile welding of component converted from Robotic welding to low cost copy profile SPM.

### Benefits

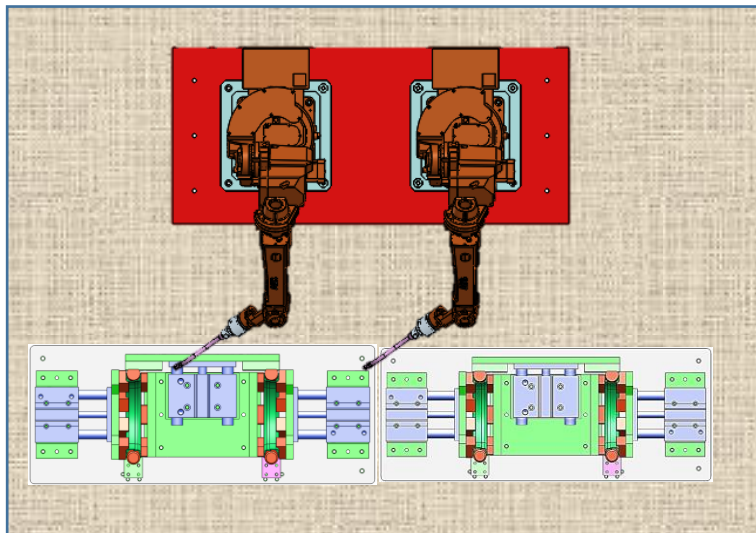


- Running Cost reduces upto 20%
- Utilities cost also reduces.
- Investment reduces to 1/3rd.

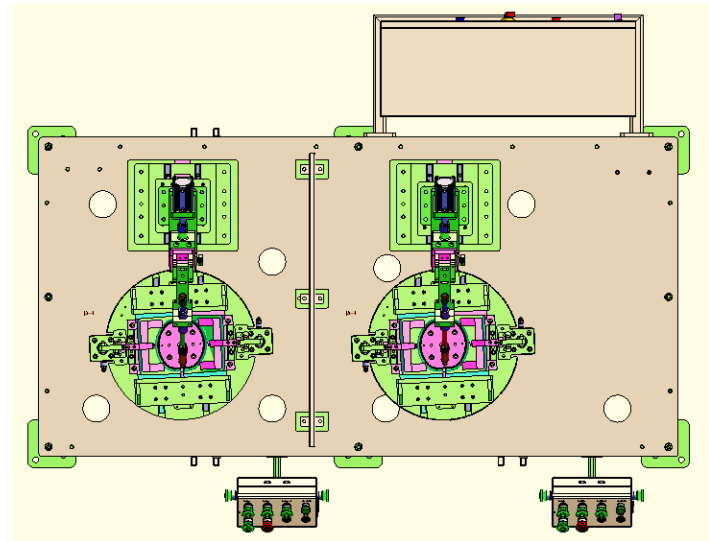
## Component Description



### Existing Set up (Robotic Type)



### New Set up (Cam operated Welding SPM)



## System Description :

- Earlier customer was doing the profile welding by Robot only. This was incurring High investment of Robot with accessories
- We proposed Cam based profile Welding SPM with low investment and high productivity.
- Two parallel station on machine eliminates the loading / unloading time of component similar to Robotic welding system.

## Benefits of Welding SPM as compared to Robotic welding system:

Low investment	Investment Reduces by 65%
High Productivity	Productivity increased upto 10%
Less space utilization	Space requirement reduces upto 30%
Low utility cost	Utilities cost also reduces upto 20%

